

State of Wyoming Corner Record

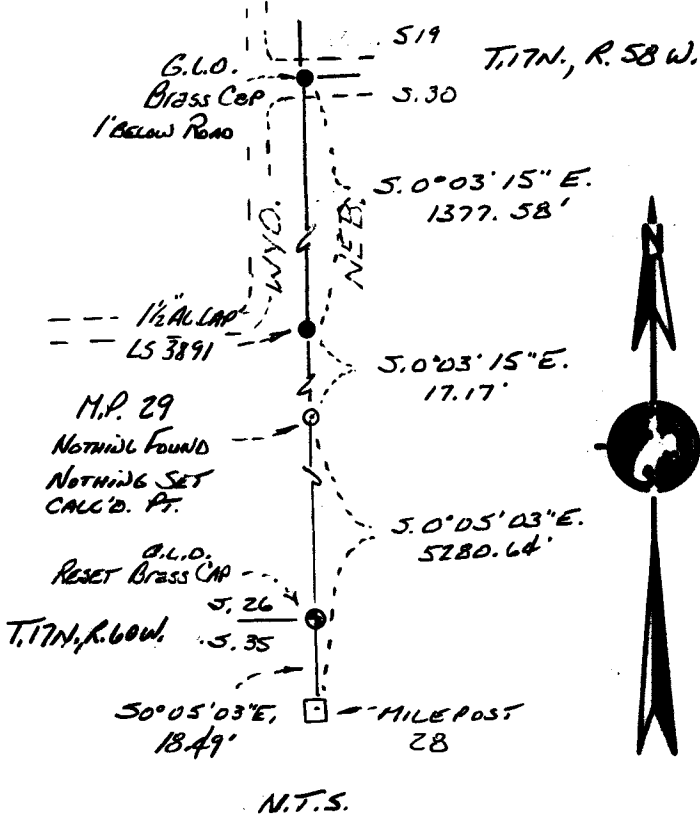
(In compliance with the CORNER PERPETUATION AND FILING ACT, Wyoming Statutes, 1977, Section 36-11-101, et. seq., and the Rules and Regulations of the Board of Registration for Professional Engineers and Professional Land Surveyors.)

Reverse side of this form may be used if more space is needed.

Record of original survey and citation of source of historical information (if corner is lost or obliterated). Description of corner monumentation evidence found and/or monument and accessories established to perpetuate the location of this corner. Sketch of relative location of monument, accessories, and reference points with course and distance to adjacent corner(s) (if determined in this survey). Method and rationale for reestablishment of lost or obliterated corner.

G.L.O. Record: Edward F. Stahle, U.S. Deputy Surveyor, May 26, 1908. 79.89 chains To the 28 Mile Cor., a plain trace of mound and pits, with decayed end of post in center of mound. I set a monolith of granite 6 ft. long, 10 ins. square, 3 ft. in the ground for 28 Mile Cor., marked WYO on W.; NEB on E. and 28 M on S. faces.

Found: Granite monolith as noted above leaning eastwardly. I dug below the granite monolith in the old existing hole and attempted to reset the Milepost vertically. With the aid of two men it was not possible to reset the monument to true vertical position. At the base the monument is in its true original position.



LARAMIE COUNTY CLERK
CHEYENNE, WY.
163690
95 JUN 15 AM 10 16

SEE ALSO RECORD OF SURVEY TO BE FILED IN LARAMIE COUNTY CLERKS OFFICE.

BOOK 1400

0480

Date of Field Work: March 1995 Office Reference: A.V.I. Project No. 2-1847.94

CROSS INDEX DIAGRAM

A	1	2	3	4	5	6	7	8	9	10	11	12	13	14	15	16	17	18	19	20	21	22	23	24	25	26
B																										
C	6				5					4																
D																										
E																										
F																										
G																										
H	7				8					9																
I																										
J																										
K																										
L																										
M																										
N																										
O																										
P																										
Q																										
R																										
S																										
T	30				29					28																
U																										
V																										
W																										
X																										
Y	31				32					33																
Z																										

Firm/Agency, Address

PREPARED BY:

Paul A. Reid, P.L.S.
A.V.I., P.C.
2035 Westland Road
Cheyenne, WY 82001
(307) 637-6017

This corner record was prepared by me or under my direction and supervision.

SEAL & SIGNATURE

